

Long Term Changes in Recruitment, Population Dynamics and Status of European Eel in a River and Lagoon System in Southern England

Bark, A. tony.bark@kcl.ac.uk

Knights, B.

Williams, B.

Ball, M.

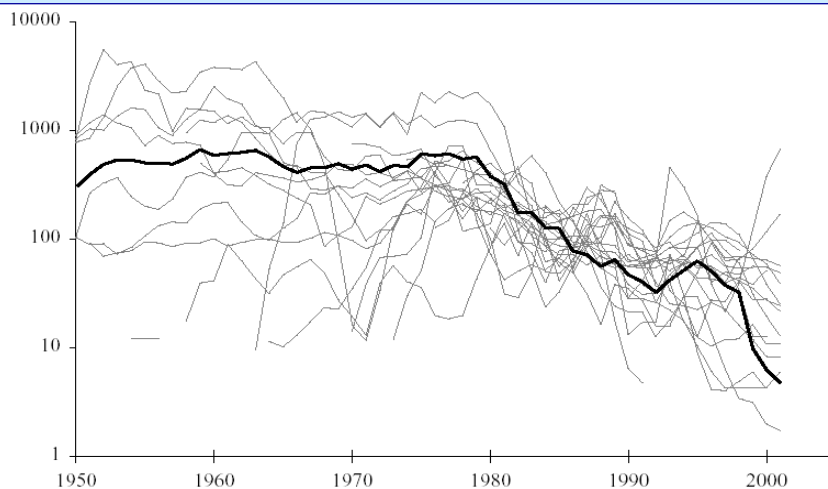
Dunn, S.

Williams, F.

Winter, E.

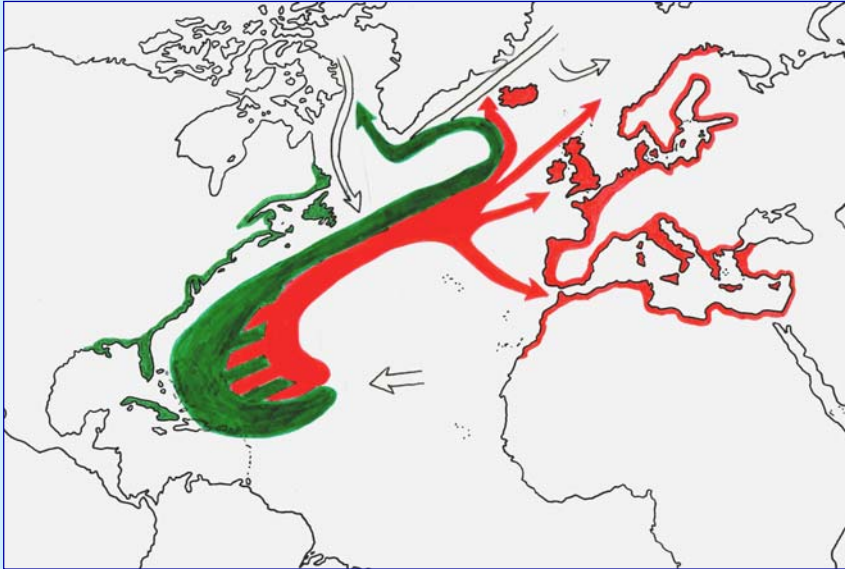
The material in this file is copyright © 2003 by the authors

European declines in recruitment; from ICES/EIFAC (2002).

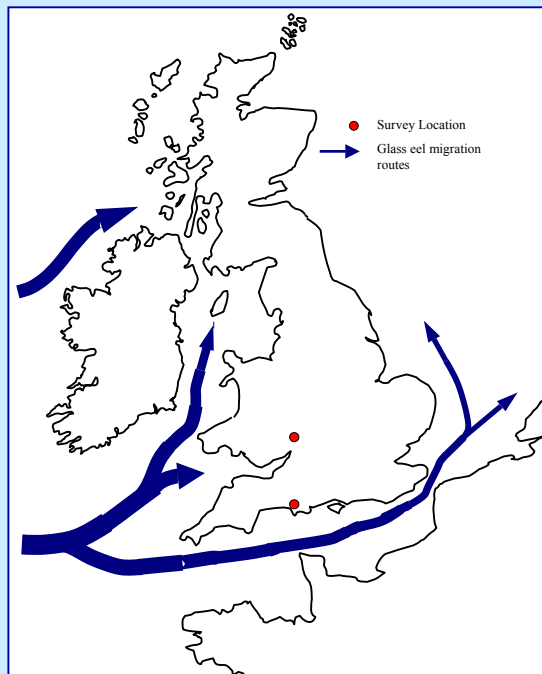


Evolution of eel recruitment over the past five decades: data series and common trend.

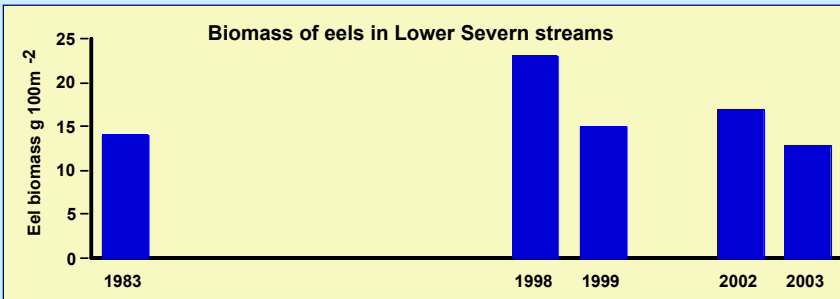
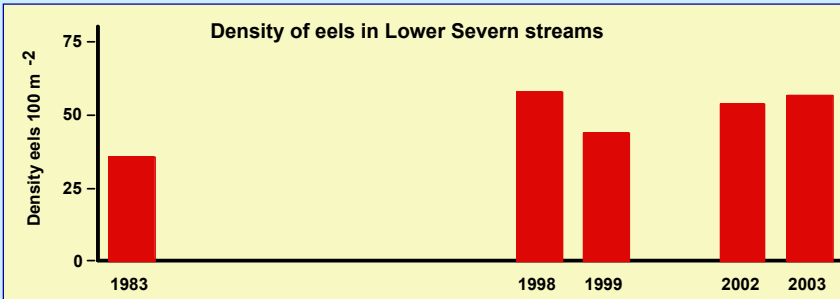
Migration routes and ranges of *A. anguilla* & *A. rostrata*



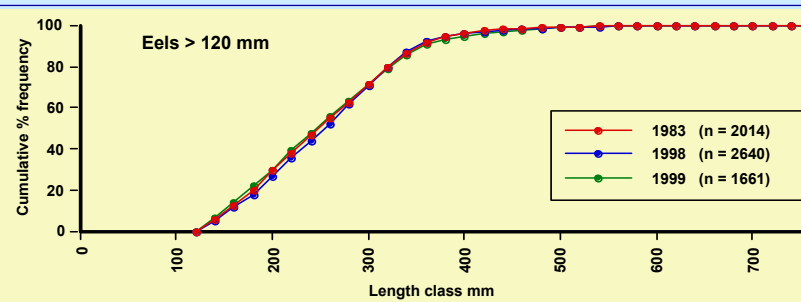
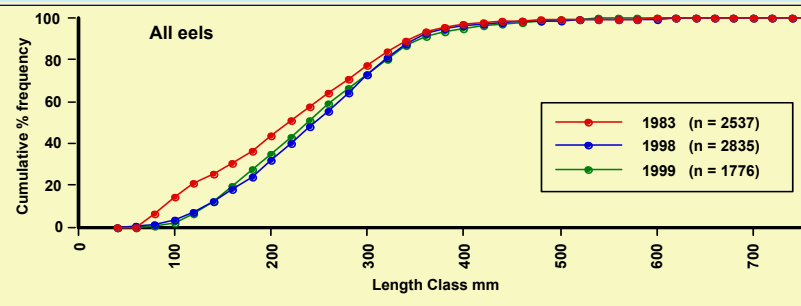
Survey locations in relation to glass eel migration routes around the UK

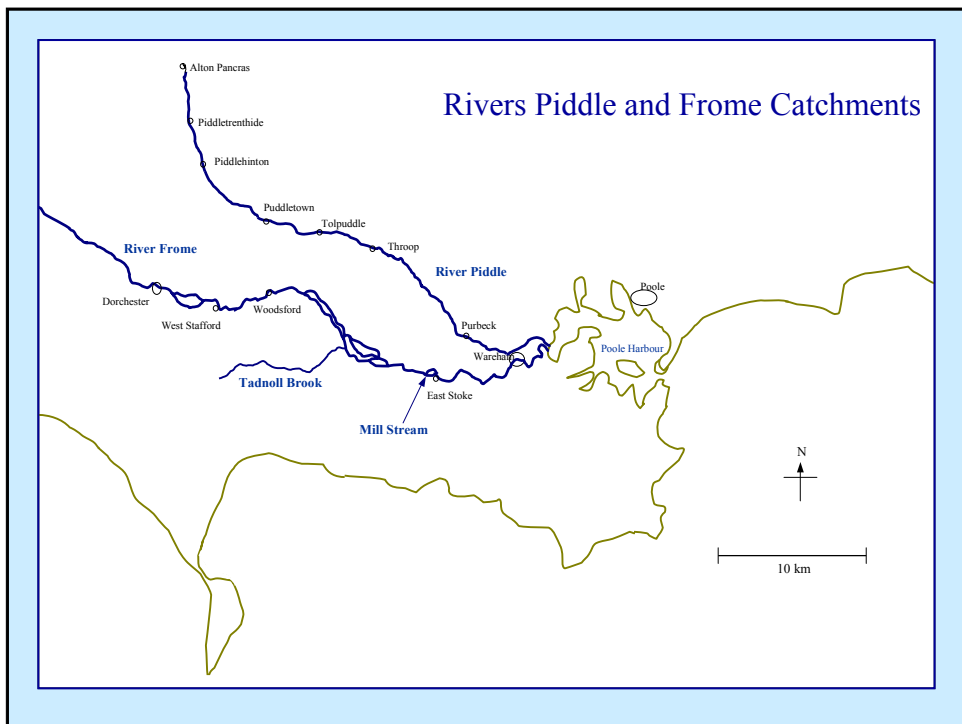


Lower River Severn streams, density and biomass 1983-2003



Lower River Severn streams, cumulative % length frequency

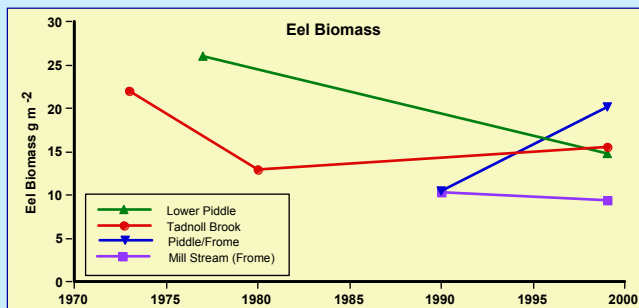
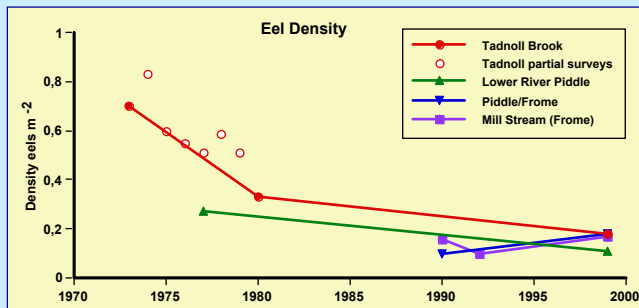




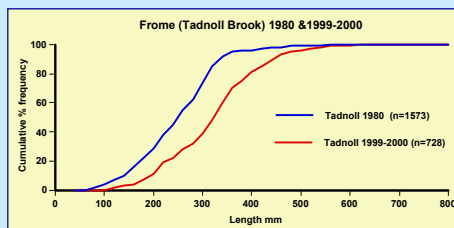
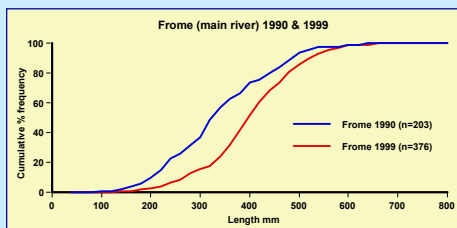
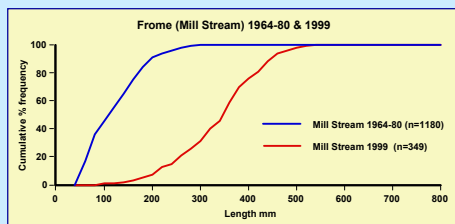
Historic Time Series Data for the Rivers Piddle and Frome

Lower Piddle	1976/1977	Major eel study (Morrice <i>et al</i>)
Frome Tadnoll Brook	1973-1980	Study of trout/eel interactions (Mann & Blackburn)
Frome Mill Stream	1991/1992	Monthly surveys (Ibbotson <i>et al</i>)
	1963-1984	Irregular series of samples (Institute of Freshwater Ecology)
Piddle/Frome	1990	10 sites surveyed for eels - 7 on Frome, 3 on Piddle (UK National Rivers Authority)

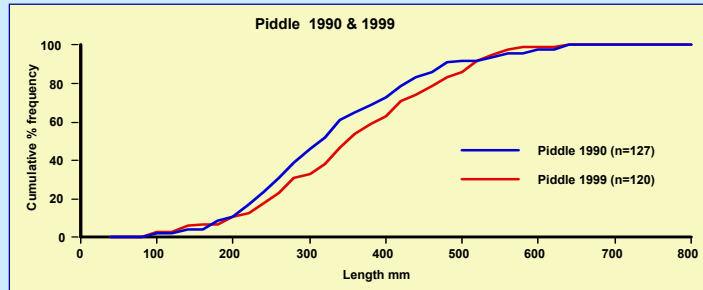
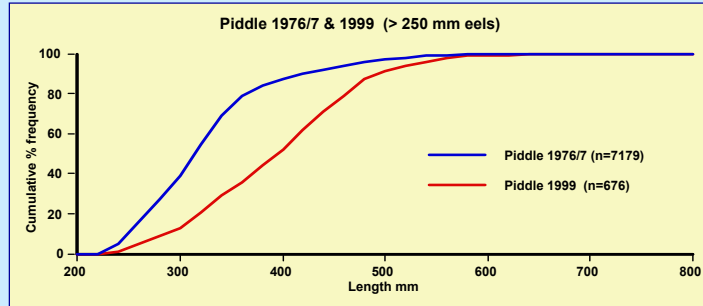
Trends in density and biomass in the Piddle and Frome 1977-2000



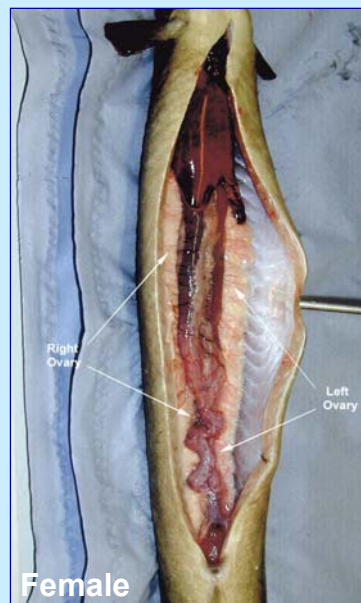
Changes in cumulative % length frequencies in the Frome 1964-1980, 1999.



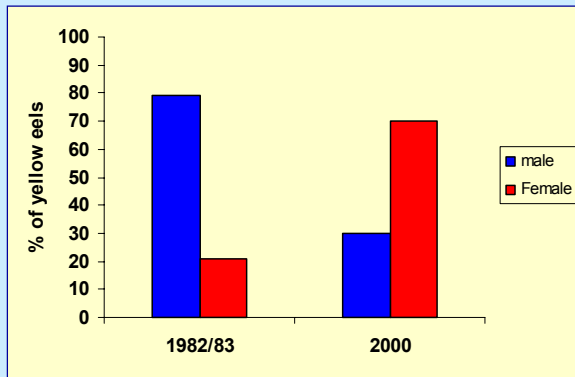
Changes in cumulative % length frequencies in the Piddle 1976/77 to 1999



Male and Female yellow eels from the Tadnoll Brook

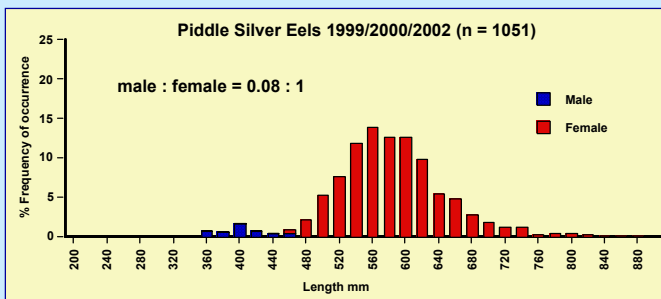
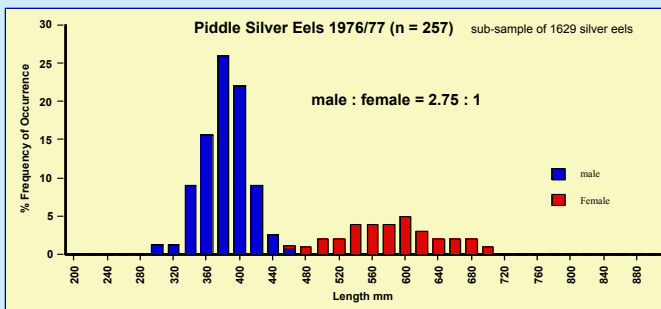


Tadnoll Brook sex ratios based on gonad examination of yellow eels

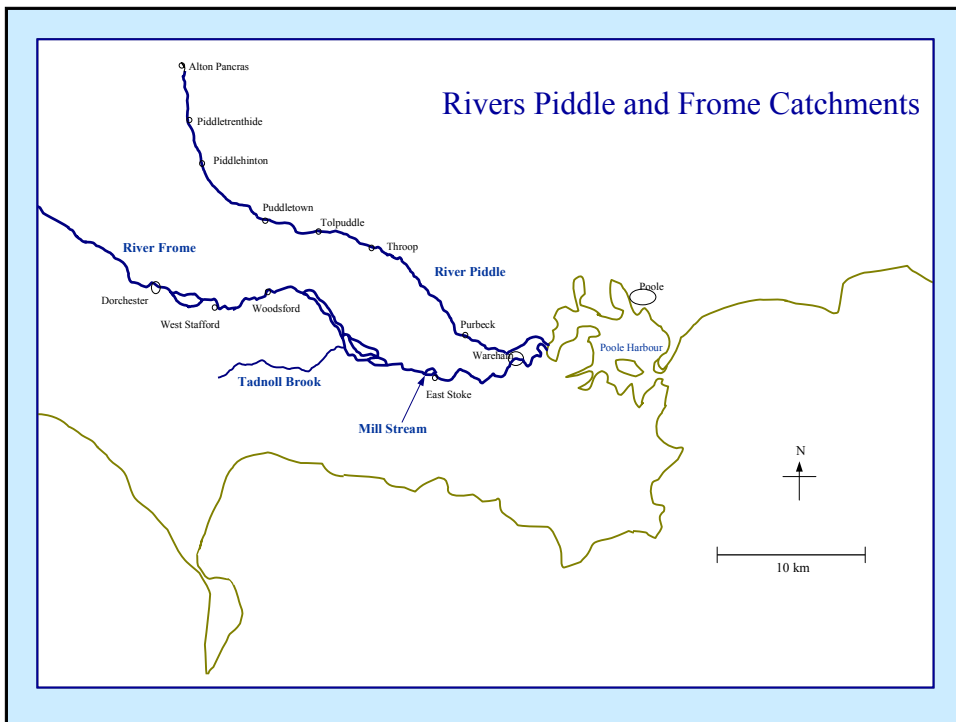
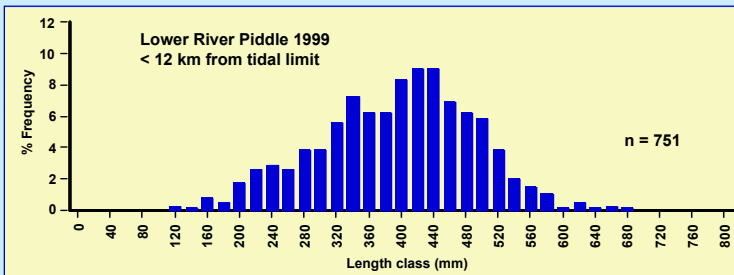
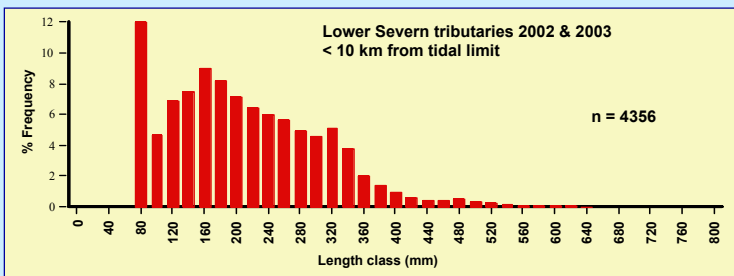


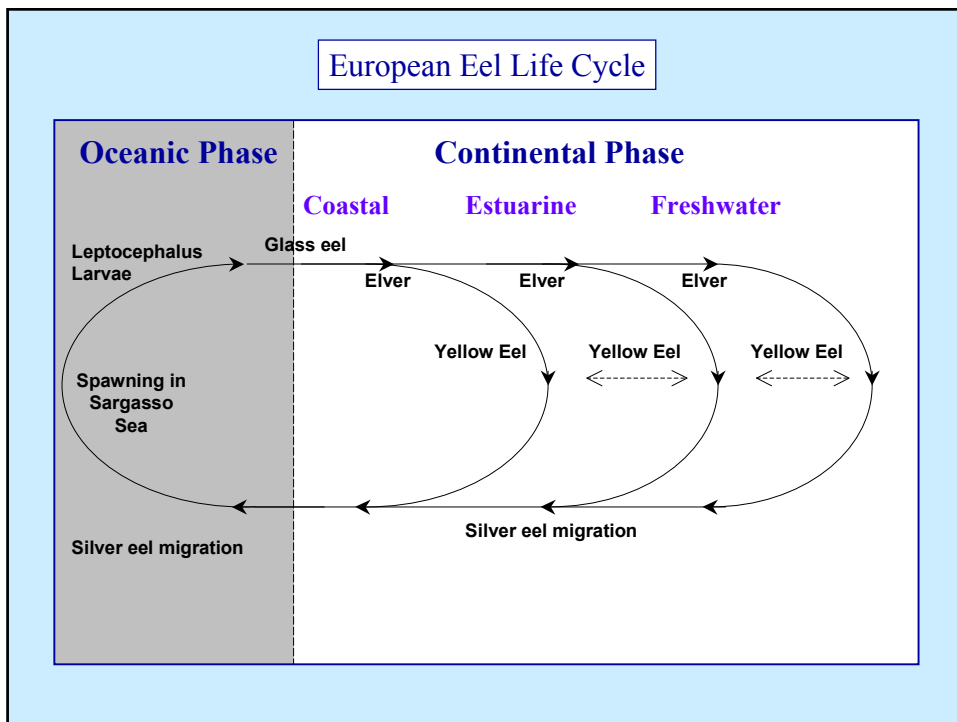
1982/83	3.7 : 1	n = 1126
2000	0.43 : 1	n = 246

Changes in sex ratios of silver eels in the River Piddle 1976 - 2002



Comparison of eel population structure in the Rivers Severn and Piddle





Acknowledgements

UK Ministry of Agriculture, Fisheries and Food and the UK Environment Agency for funding the 1998/99 eel surveys

UK Department for Environment, Food and Rural Affairs for funding the 2002/03 eel surveys

References

Aprihamian, M.W. (1983/84) Original data from River Severn eel study. (Personal Communication)

Knights, B., Bark, A., Ball, M., Williams, F., Winter, E., and Dunn, S. (2001) *Eel and Elver Stocks in England and Wales - Status and Management Options*. EA R&D Technical Report No. W248.

Ibbotson, A. *et al* (1994) Spatial and temporal distribution of fish in a small lowland stream. *Fisheries Management and Ecology*. **1**: 143-156

ICES (2002) *Report of the Working Group on Eels*. Nantes, France. 2–6 September 2002

Mann, R.H.K & Blackburn, J.H (1991) The biology of the eel *Anguilla anguilla* L. in an English chalk stream and interactions with juvenile trout *Salmo trutta* L. and salmon *Salmo salar* L. *Hydrobiologia* **218**: 65-76

Morrice, C.P, Buckley, B.R & Stott, B. (undated) *The yellow and silver eel (Anguilla anguilla L.) populations of a chalk stream in southern England*. MAFF unpublished draft report.